



## FOR LEASE - EXECUTIVE OFFICE SUITE

<b>OFFICE SUITE SIZE:</b>	110-140 SF - see attached diagram
<b>GROSS RENTAL RATES:</b>	\$350 - \$400/Month - Includes utilities, CAM, taxes, janitorial, Wi-Fi
<b>SHARED AMENITIES:</b>	Reception area, kitchenette, bathroom and utility closet

### Presented By:

**Linda Kost**  
Senior Broker/Partner  
847.910.8820  
LKost@realtymetrix.com

**Dave Schmidt**  
Managing Broker/Partner  
847.404.3851  
DSchmidt@realtymetrix.com

Realty Metrix Commercial  
2390 Esplanade Drive  
Suite 201  
Algonquin IL 60102



# FOR LEASE

## Upscale Executive Office Suites

1457 Merchant Drive • Algonquin, IL 60102



### Presented By:

**Linda Kost**  
Senior Broker/Partner  
847.910.8820  
LKost@realtymetrix.com

**Dave Schmidt**  
Managing Broker/Partner  
847.404.3851  
DSchmidt@realtymetrix.com

Realty Metrix Commercial  
2390 Esplanade Drive  
Suite 201  
Algonquin IL 60102

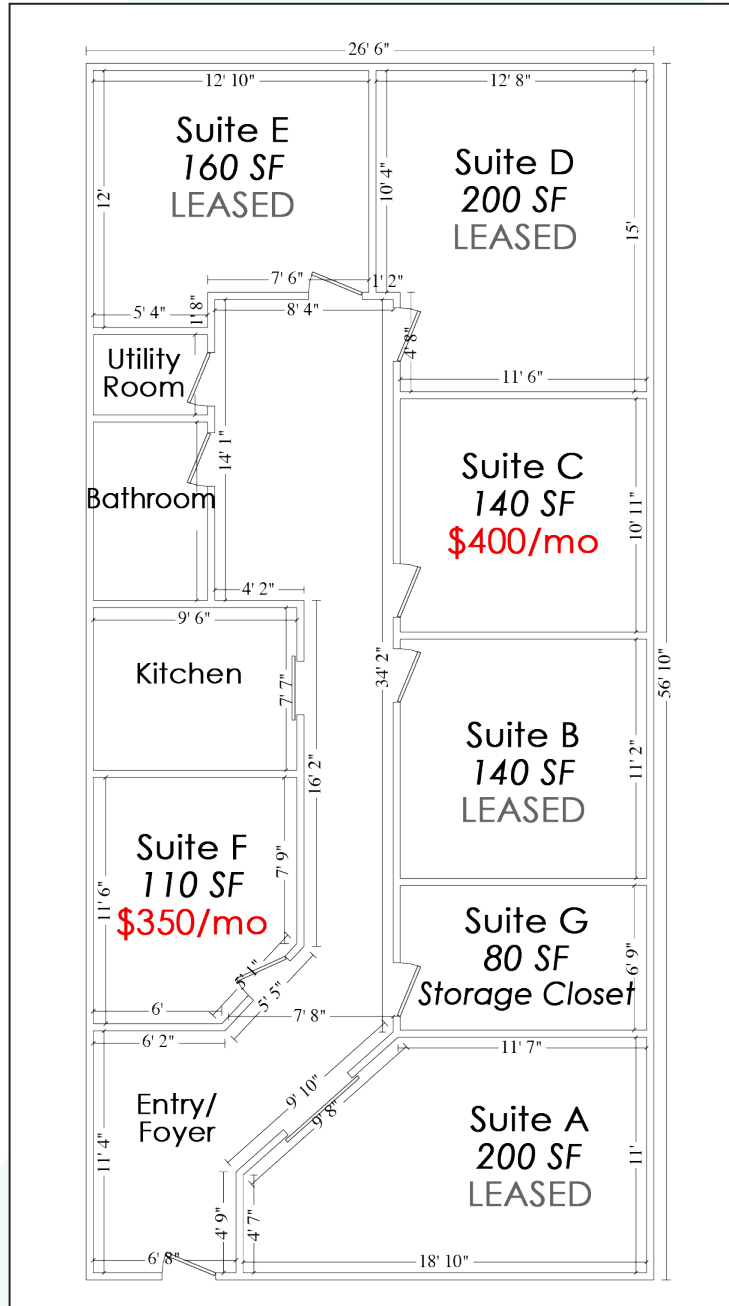


# FOR LEASE

## Upscale Executive Office Suites

1457 Merchant Drive • Algonquin, IL 60102

### TOTAL 1,500 SF



#### Presented By:

**Linda Kost**  
Senior Broker/Partner  
847.910.8820  
LKost@realtymetrix.com

**Dave Schmidt**  
Managing Broker/Partner  
847.404.3851  
DSchmidt@realtymetrix.com

Realty Metrix Commercial  
2390 Esplanade Drive  
Suite 201  
Algonquin IL 60102

