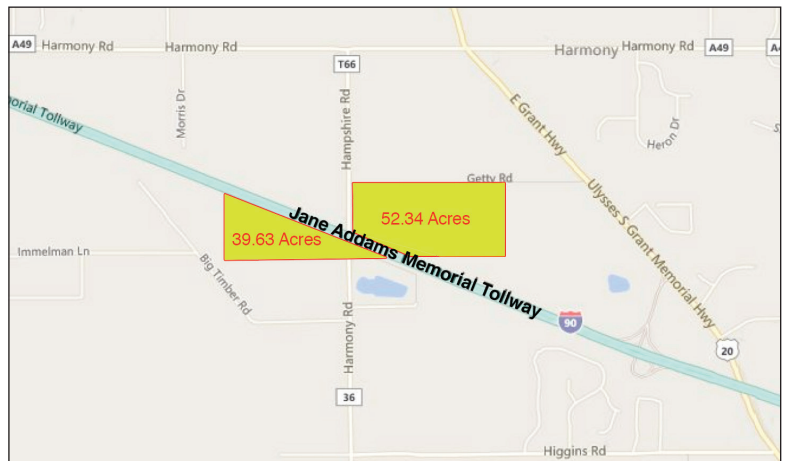
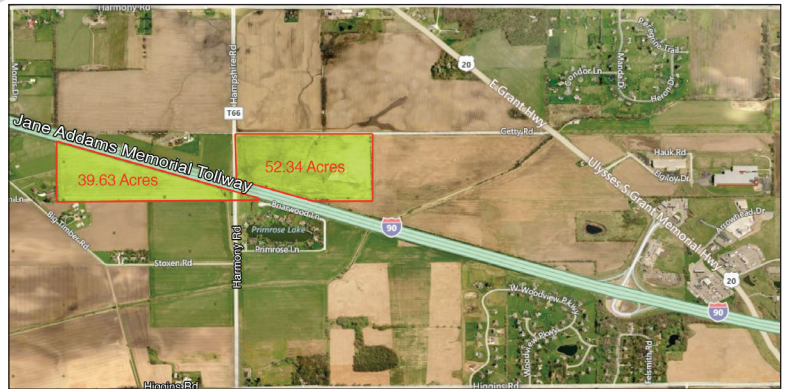


Land

FOR SALE PROPERTY SPECIFICATIONS

Description:	Land for Development
Land Size:	92 Acres Divisible <ul style="list-style-type: none"> • 52 Acres Commercial • 40 Acres Residential
Possession:	Closing
Topography:	Flat
Frontage Dimensions:	5,000 FT on I-90
Zoning:	AG
PIN Numbers:	01-04-200-034 01-03-100-001 01-04-200-033 01-04-100-027
Real Estate Taxes:	\$1,087.00 (2014)
Sale Price:	Negotiable



PROPERTY OVERVIEW

For Sale 92 Acres Development Opportunity

- 52 acres commercial development opportunity
- 42 acres residential development opportunity
- Located off the I-90/Route 20 interchange in Hampshire, IL
- Frontage on I-90
- Sewer and water nearby Route 20
- Traffic counts:
Route 20 at I-90: 9,950 cars per day
I-90 at Route 20: 44,700 cars per day

Presented By:

Linda Kost
Senior Broker/Partner
847.910.8820
LKost@realtymetrix.com

Dave Schmidt
Managing Broker/Partner
847.404.3851
DSchmidt@realtymetrix.com

Realty Metrix Commercial
2390 Esplanade Drive
Suite 201
Algonquin IL 60102





Presented By:

Linda Kost
Senior Broker/Partner
847.910.8820
LKost@realtymetrix.com

Dave Schmidt
Managing Broker/Partner
847.404.3851
DSchmidt@realtymetrix.com

Realty Metrix Commercial
2390 Esplanade Drive
Suite 201
Algonquin IL 60102

