

## Land - Retail Improved Lot

### FOR SALE PROPERTY SPECIFICATIONS

<b>Description:</b>	Land - Ready to Build
<b>Land Size:</b>	.97 Acres/42,253 SF
<b>Dimensions:</b>	134' x 314'
<b>Frontage:</b>	134' on Dundee/Huntley
<b>Possession:</b>	Closing
<b>Topography:</b>	Flat
<b>Utilities:</b>	To Site
<b>Zoning:</b>	B-2
<b>Real Estate Taxes:</b>	\$5,139.76 (2017)
<b>Sale Price:</b>	<b>\$160,000</b>



### PROPERTY OVERVIEW Development Opportunity

- Site ready to build next to existing retail center
- Prime .97 acre retail or office pad just off signalized intersection of Dundee/Huntley Road & Haligus.
- Pad ready with all utilities to site
- PIN# 18-34-176-005

#### Presented By:

**Dave Schmidt**

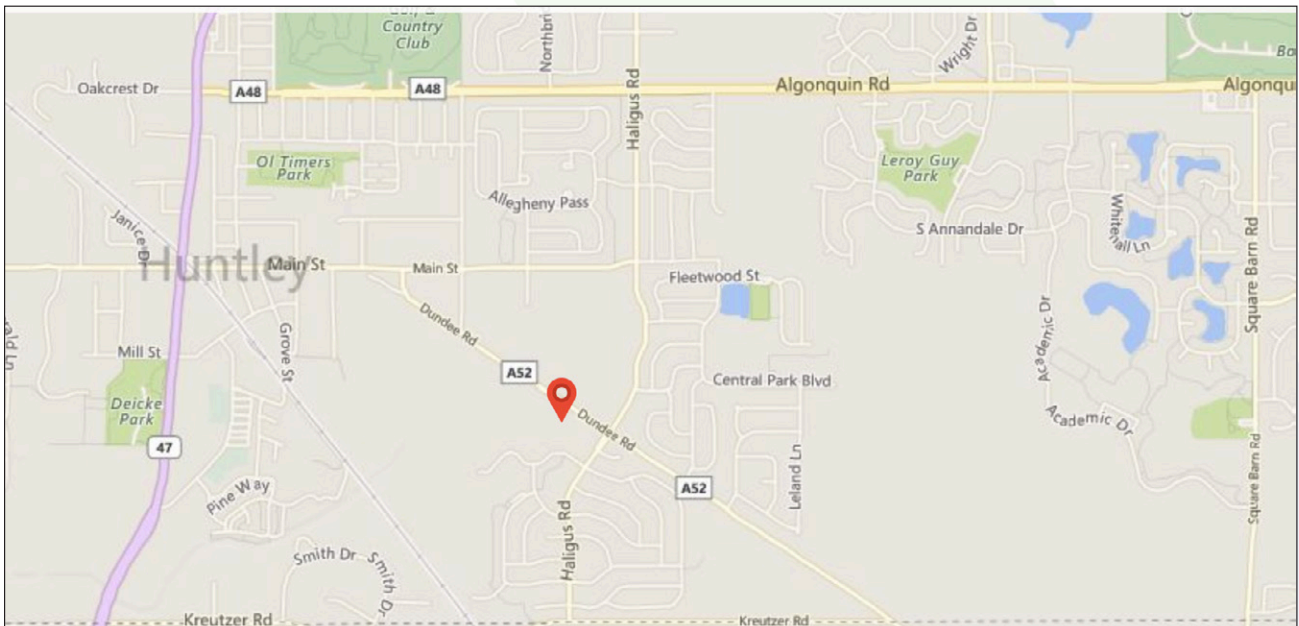
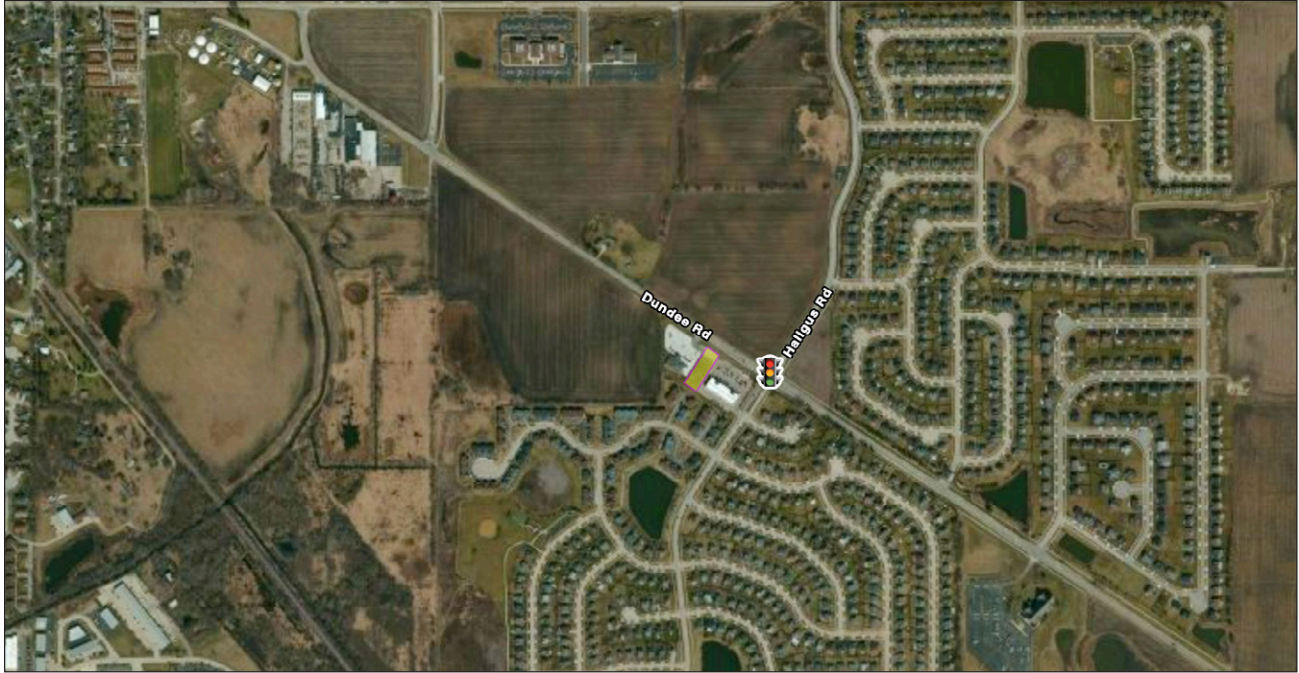
Managing Broker/Partner  
847.404.3851  
DSchmidt@realtymetrix.com

**Linda Kost**

Senior Broker/Partner  
847.910.8820  
LKost@realtymetrix.com

Realty Metrix Commercial  
2390 Esplanade Drive  
Suite 201  
Algonquin, IL 60102





## Presented By:

**Linda Kost**  
Senior Broker/Partner  
847.910.8820  
LKost@realtymetrix.com

**Dave Schmidt**  
Managing Broker/Partner  
847.404.3851  
DSchmidt@realtymetrix.com

Realty Metrix Commercial  
2390 Esplanade Drive  
Suite 201  
Algonquin IL 60102





## Presented By:

**Linda Kost**  
Senior Broker/Partner  
847.910.8820  
LKost@realtymetrix.com

**Dave Schmidt**  
Managing Broker/Partner  
847.404.3851  
DSchmidt@realtymetrix.com

Realty Metrix Commercial  
2390 Esplanade Drive  
Suite 201  
Algonquin IL 60102

