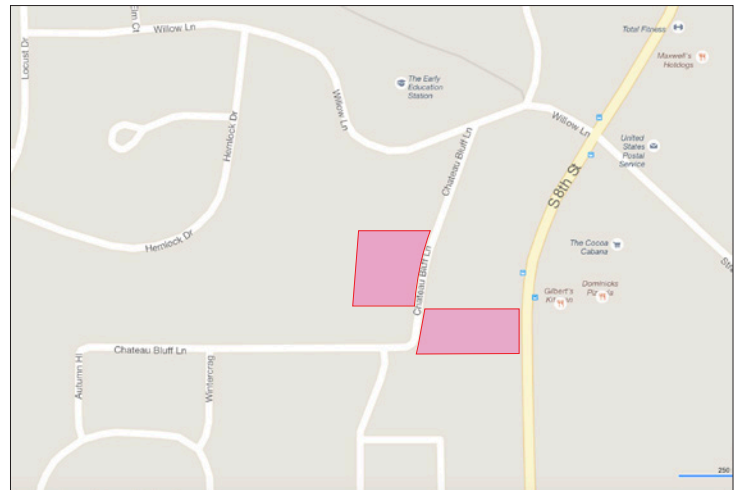


## Land - Multi-Family & Commercial

Two Fully Improved Lots:  
1.65 Acres, 1.53 Acres

### FOR SALE PROPERTY SPECIFICATIONS

<b>Description:</b>	Two Commercial Lots
<b>Land Size:</b>	Lot 1 - 1.65 Acres Lot 2 - 1.53 Acres
<b>Topography:</b>	Flat to Slight Hill
<b>Possession:</b>	Closing
<b>Zoning:</b>	Commercial
<b>Utilities:</b>	To Site
<b>Real Estate Taxes:</b>	Lot 1 - \$\$8,735.32 (2017) Lot 2 - \$4,828.62 (2017)
<b>Sale Price:</b>	<b>Lot 1 - \$368,000 (\$5.42 PSF)</b> <b>Lot 2 - \$295,000 (\$4.42 PSF)</b>



- Directions: Route 31 to Willow Lane West, then south on Market Loop
- PIN: Lot 1 - 03-27-179-005 (1.65 Acres)  
Lot 2 - 03-27-178-003 (1.53 Acres)

#### Presented By:

**Linda Kost**  
Senior Broker/Partner  
847.910.8820  
LKost@realtymetrix.com

**Dave Schmidt**  
Managing Broker/Partner  
847.404.3851  
DSchmidt@realtymetrix.com

Realty Metrix Commercial  
2390 Esplanade Drive  
Suite 201  
Algonquin IL 60102

