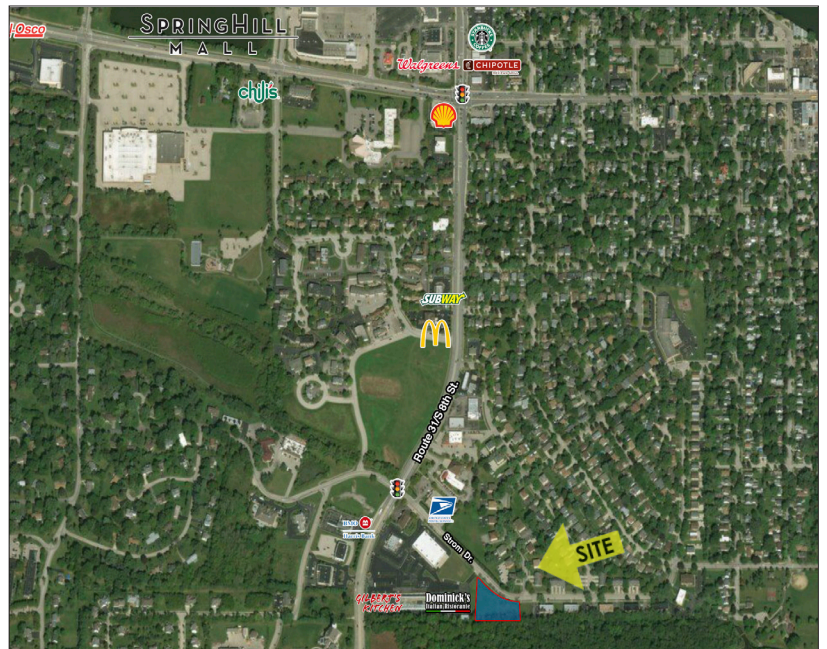


Land - Residential Multi Family

FOR SALE PROPERTY SPECIFICATIONS

Description:	Multi Family
Land Size:	1.7 Acres
Topography:	Flat
Possession:	Closing
Zoning:	R-5 Residential Medium Density +/- 24 Units
Utilities:	To Site
Sale Price:	\$430,000



- Directions: Route 31 to Strom Drive East
- Owner will work with buyer for maximum density

Presented By:

Linda Kost
Senior Broker/Partner
847.910.8820
LKost@realtymetrix.com

Dave Schmidt
Managing Broker/Partner
847.404.3851
DSchmidt@realtymetrix.com

Realty Metrix Commercial
2390 Esplanade Drive
Suite 201
Algonquin, IL 60102

