

LAND FOR SALE - 1.32 ACRES RETAIL • AUTOMOTIVE • MEDICAL



PROPERTY SPECIFICATIONS

Description: Vacant Land

Land Size: 1.32 Acres/57,480 SF
(to be verified by survey)

Topography: Level

Utilities: Stubbed in to Lot Line

Sewer/Water: Stubbed in to Lot Line

Frontage: Approximately 193 Feet

Possession: Closing

Zoning: B-2 Commercial PUD

Real Estate Taxes: \$19,323.48 (2020)

Sale Price: \$13.50 PSF

PROPERTY OVERVIEW

1.32 ACRES VACANT LAND

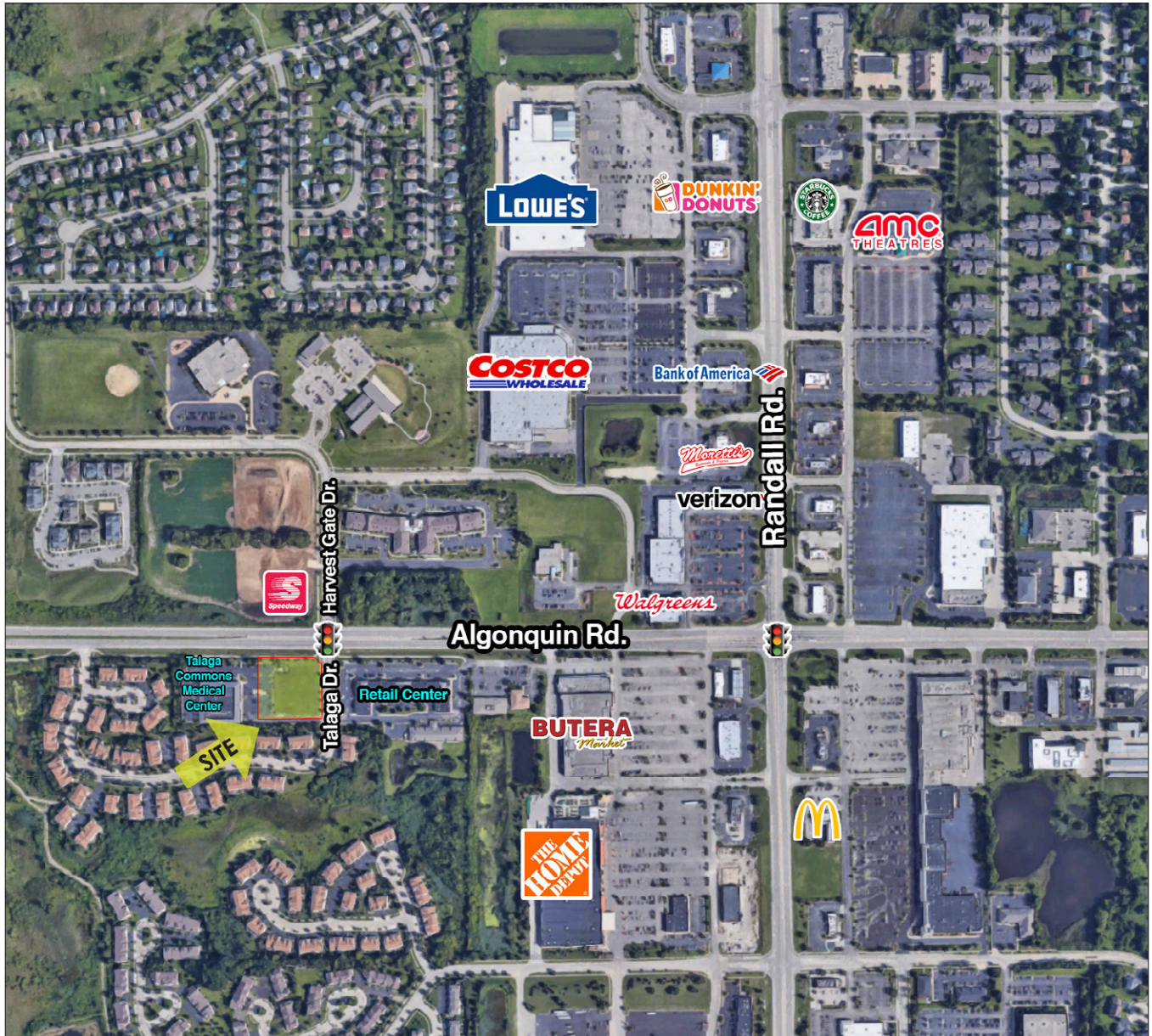
- Vacant, improved land with off site detention
- Located on W. Algonquin Rd & Talaga Rd. - a signalized intersection
- Adjacent to Talaga Medical Center building (with cross access) and across the street from Speedway Gas Station
- Prime exposure along the Algonquin Rd retail corridor
- Area retailers include Butera, Costco, Speedway, Home Depot, Lowes, Walgreens & Montessori Day Care
- VPD on Algonquin Rd: 25,200
- **PIN:** 19-30-404-002

LINDA KOST

Senior Broker
847.910.8820
LKost@realtymetrix.com

Realty Metrix Commercial
2390 Esplanade Drive, Suite 201
Algonquin, IL 60102

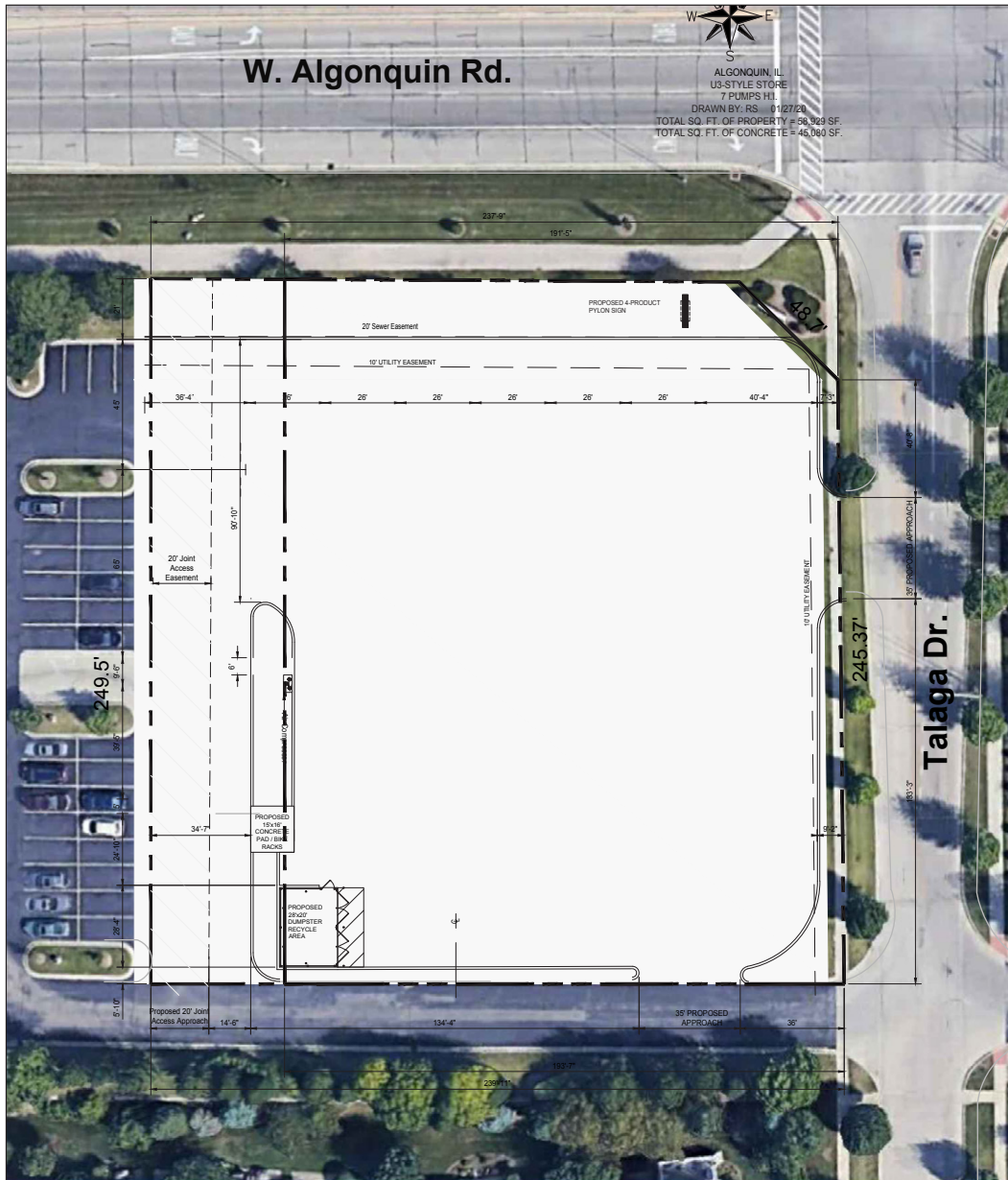




LINDA KOST
Senior Broker
847.910.8820
LKost@realtymetrix.com

Realty Metrix Commercial
2390 Esplanade Drive, Suite 201
Algonquin, IL 60102





LINDA KOST
Senior Broker
847.910.8820
LKost@realtymetrix.com

Realty Metrix Commercial
2390 Esplanade Drive, Suite 201
Algonquin, IL 60102

