

## HOME/OFFICE FOR SALE

- Large home/office on 6.4 acres, with separate entrances
- Ample room for work from home, home schooling and environmental studies
- In-law or COVID Isolation space in lower level



## PROPERTY SPECIFICATIONS

<b>Description:</b>	Beautiful Custom Home/Office
<b>Building Size:</b>	1st & 2nd floor residential is 3,393 SF Lower level office/in-law/home school arrangement is 2,319 SF, with separate entrance, bedroom, bathroom, powder room, kitchen, laundry, garage
<b>Year Built:</b>	1973
<b>Land Size:</b>	6.4 Acres
<b>Topography:</b>	Rolling
<b>Sewer/Water:</b>	Well & Septic (Private)
<b>Lot Dimensions:</b>	649' Frontage x 424' North x 654' East x 408' West
<b>Possession:</b>	Closing
<b>Zoning:</b>	F - Farming with Buildings
<b>Real Estate Taxes:</b>	\$12,773 (2019)
<b>Sale Price:</b>	<b>\$595,000</b>

## PROPERTY OVERVIEW

### 5,892 SF HOME/OFFICE

- **Perfect Work/Live/Home School/In-law Suite**
- **Excess land for future outbuildings**
- 5 bedrooms, 3 1/2 baths, stone fireplace, deck, pond
- 2-car garage plus lower level overhead garage door with storage
- Commercial signage opportunity on Tyrrell Rd.
- 2 driveway entrances - one to house, one to rear of property for vehicle storage, landscape materials, dog kennels, etc.
- Gently used home/office, new roof in 2012, new hot water heater and furnace in 2015; updated bathrooms, kitchen and granite countertops
- New flooring throughout 1st floor & lower level
- Dog door and fenced yard
- Unincorporated Kane Co.
- Minutes from I-90, at Randall Rd. interchange
- **PIN:** 03-31-100-003

**LINDA KOST**  
Senior Broker  
847.910.8820  
LKost@realtymetrix.com

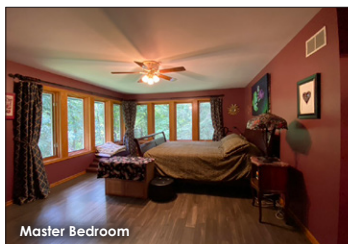
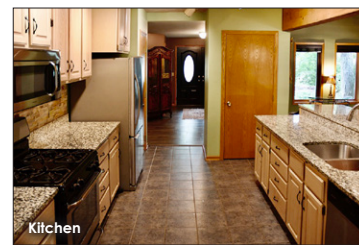
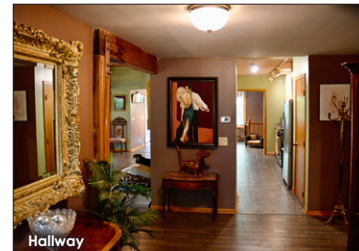
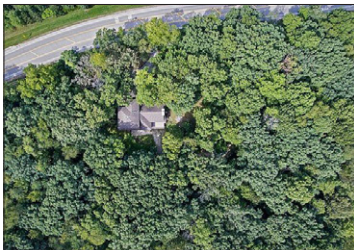
Realty Metrix Commercial  
2390 Esplanade Drive, Suite 201  
Algonquin, IL 60102



## FOR SALE

OFFERED AT \$595,000

- Residential/Commercial Development opportunity
- Ample room for future outbuildings
- Dual Entrances on 6.40 wooded acres
- 9 room home/office with rustic cedar beams
- Pond



**LINDA KOST**  
Senior Broker  
847.910.8820  
LKost@realtymetrix.com

Realty Metrix Commercial  
2390 Esplanade Drive, Suite 201  
Algonquin, IL 60102



**GRID7**  
PROPERTIES





Bathroom



Bathroom



Loft Overlook



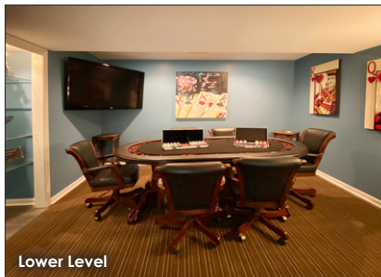
2nd Bedroom



2nd Bathroom



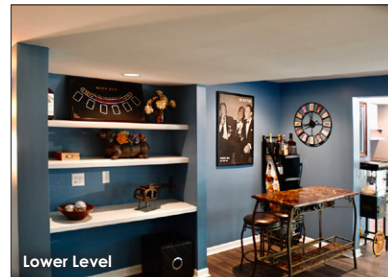
3rd Bathroom



Lower Level



Lower Level



Lower Level



Lower Level Bath/Laundry



Lower Level



Loft



2nd Floor Bedroom



2nd Floor Bedroom





Deck



Patio



Side View



Outside - side



Firepit



Outside Fenced Area



Outside - Front



Outside - Back



Outside - Aerial Closeup



Outside - Aerial

### Lower Level - 2,499 SF

- In-Law/Office/Home Schooling
- Separate front door entrance
- Full kitchen
- Huge Family room w/ lots of windows
- Master bedroom w/master bathroom
- Private Laundry
- Bonus room could be used for additional office space, additional bedroom, game room, or you choose!
- Eating area
- Walk out patio with garden and yard
- Private one-car garage with huge workshop space
- Additional half bath

### 1st Floor - 3,393 SF

- Show stopping great room with floor to ceiling one-of-a-kind field stone fireplace
- Oversized open-concept kitchen, dining and family room
- Breakfast nook with deck
- 1st floor master suite w/massive walk-in closet and en-suite bathroom, including separate shower and Jacuzzi whirlpool tub
- Large laundry room
- Powder room
- Bonus room - office/den/game room/man cave with deck
- Lots of closets!
- 2-car garage with separate driveway
- Oversized windows bring in lots of light throughout house, including skylights!
- 3 decks!
- Updated bathrooms
- Updated kitchen with new tile backsplash and granite countertops

### 2nd Floor - SF Included in

#### 1st Floor

- 3 oversized bedrooms with ample closets
- Large bathroom with double vanity
- Bonus loft, perfect for children's play area
- Brand new carpet throughout

#### Bonus

- Business signage allowed
- 2 separate driveways
- 2 separate garages for up to 3 cars
- Versatile living spaces
- 4 decks total
- Fire pit
- Lots of yard space
- Pond
- Walking paths
- Brand new flooring throughout 1st floor and lower level

- Location: convenient to I-90 interchange, Advocate Sherman Hospital, Shopping
- Great schools

#### LINDA KOST

Senior Broker  
847.910.8820  
LKost@realtymetrix.com

Realty Metrix Commercial  
2390 Esplanade Drive, Suite 201  
Algonquin, IL 60102



**GRID**  
PROPERTIES





**LINDA KOST**  
Senior Broker  
847.910.8820  
LKost@realtymetrix.com

Realty Metrix Commercial  
2390 Esplanade Drive, Suite 201  
Algonquin, IL 60102



**GRID7**  
PROPERTIES